

# NEW AMHERST

A VILLAGE-CENTRED COMMUNITY



Artist's Rendition

DAVID DAW

## THE SOMERSET ESTATE

2,200 SQ. FT.

The Somerset Estate accommodates the needs of a growing family. It offers four bedrooms, including a main floor master suite with a private entrance to the covered porch. The generously proportioned kitchen allows for both a breakfast area and a formal dining room. The second floor bathroom includes dual wash basins and ample closet space for storage.

**STOP BY FOR A VISIT,  
STAY FOR A LIFETIME.**

New Amherst in Cobourg,  
is there any doubt?



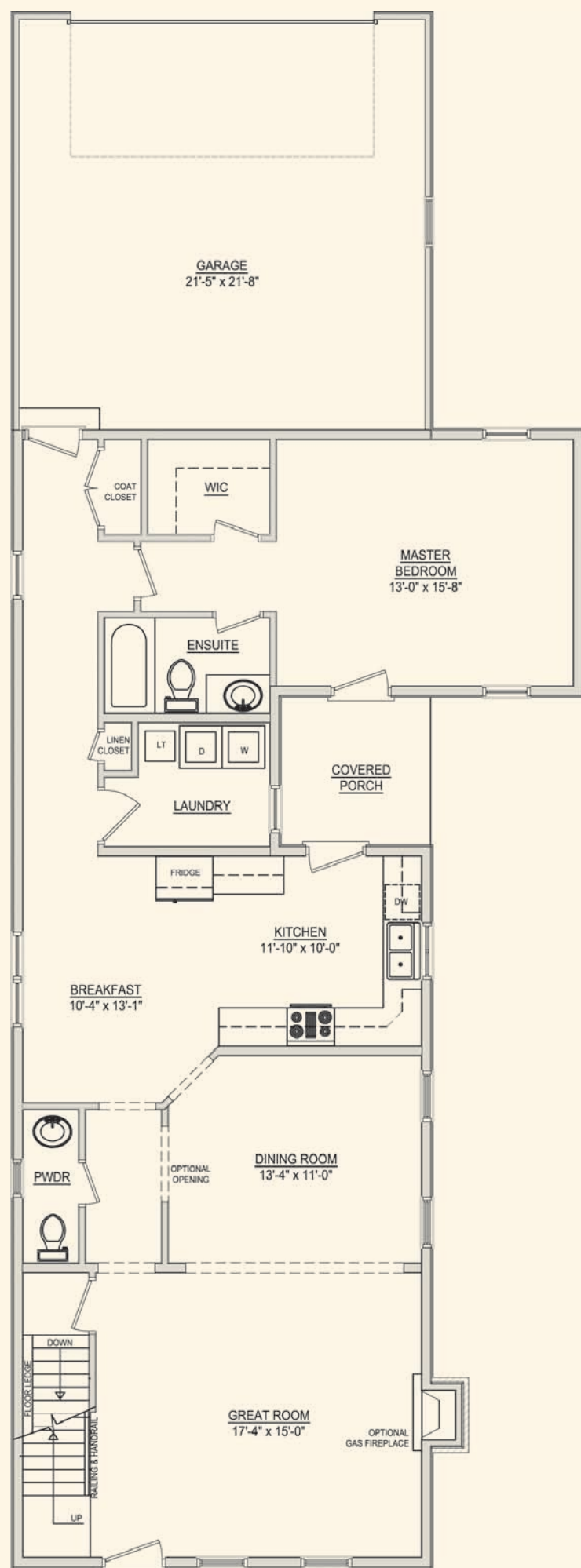
*"We used to live on fifty acres, where a walk in the woods was right outside our door. It feels the same here, as if we brought some of the country with us. We couldn't have moved anywhere else."*

NEW AMHERST HOME OWNERS  
RON AND JUDY

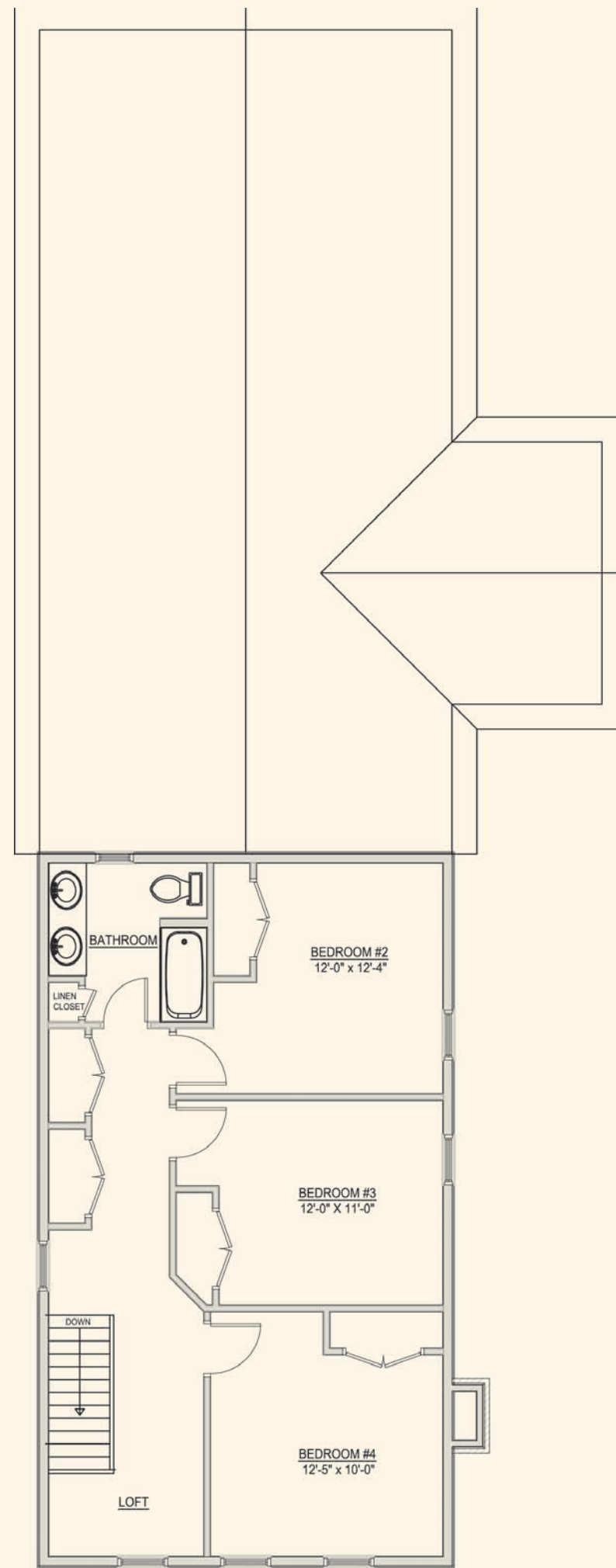
# NEW AMHERST

A VILLAGE-CENTRED COMMUNITY

MAIN FLOOR



UPPER FLOOR



All dimensions are approximate and generally comprise the greater width by the greater length. Actual useable floor area may vary from that stated, which includes open areas and areas finished below grade where applicable. Elevation renditions are artist's concepts. See sales representative for details. E & OE.

**THE SOMERSET ESTATE**  
2,200 SQ. FT.